

Gestetner

Quality Imaging, High-Speed Document Production



COPY PRINTER

5499

High Speed, Quality & Versatility Meet Every Job Head On

THE GESTETNER 5499 COPYPRINTER IS IDEAL FOR PRINT-FOR-PAY AND COMMERCIAL PRINTING ENVIRONMENTS, AS WELL AS IN-HOUSE CORPORATE REPROGRAPHICS DEPARTMENTS, MANUFACTURING AND FACILITIES MANAGEMENT FIRMS, ALL OF WHICH CONTINUALLY REQUIRE OFFSET QUALITY DOCUMENT PRODUCTION. THIS RELIABLE AND COST-EFFECTIVE SYSTEM PROVIDES YOUR ORGANIZATION WITH SHARP IMAGE QUALITY AND TIGHT REGISTRATION JOB AFTER JOB, WHILE ENABLING EASY CONNECTIVITY TO ANY WINDOWS, MACINTOSH OR NETWORKED OPERATING SYSTEM WITH A CONVENIENT EMBEDDED OPTIONAL POSTSCRIPT® 3 CONTROLLER.



The Gestetner 5499 CopyPrinter significantly boosts your productivity, versatility and bottom-line results with a lightning-fast output speed, superb image quality, plus seamless paper handling capabilities (up to 12.5" x 17.5") for always-professional throughput onto various paper types and stocks.

With its smaller footprint, the 5499 CopyPrinter also fits right into your workplace with environmentally-friendly consumables that assure virtual *white-glove* operation. What's more — fast, easy setup assures that the 5499 CopyPrinter is already in production while most presses are still being prepared to run!

TOP QUALITY IMAGING

Inferior halftones, messy inks and inconsistent images are things of the past when you incorporate the advanced Gestetner 5499 CopyPrinter into your business. You'll benefit from continually crisp print output, along with the clearest details and impressions no matter what type of job.

- **True 600 dpi resolution** in both the scanning and printing process combines with 256 grayscale scanning to deliver precise edges, lines, text and halftone images.

Offset-like quality, copier-like convenience and cost-effective productivity.



Gestetner 5499 CopyPrinter standard colors. Custom PMS matching inks are also available.

- New earth-friendly **high-density inks** come in black plus a rainbow of stunning colors. Just change your optional color cylinder, and watch your color palette expand! With the **Gestetner CopyPrinter Custom Color Program**, you can also match any color you require by selecting the ideal custom ink. Custom ordering of any PMS® is easy and convenient, with delivery to your door!

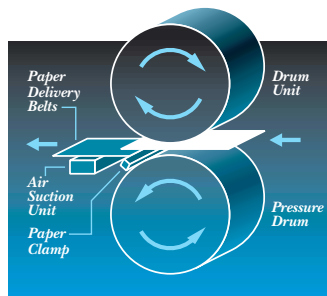
- Ink control is heightened with a **new Ink Delivery System** that vastly improves image control and produces sharp, smudge- and imperfection-free images with every print. Better control also means more economical printing with less ink consumption, plus quick dry time with no ink set-off. **Refined super-fine masters** assure more solid fill and even distribution.

- Quality is assured with all your original types thanks to precision **image control**, including *Tint Mode* for adjusting the shade of

every ink; *Letter/Photo Auto Separation*, *Letter & Photo Modes* for superb printouts of documents with both text and photos; and *Pencil Mode* for clear duplication of lightly-toned originals.

SUPER SPEED, OUTSTANDING OUTPUT

The high-performance Gestetner 5499 CopyPrinter rips through your toughest production jobs at an **ultra-fast speed of 120 pages per minute**. Ongoing productivity and print quality are yours, from paper feeding to premium output delivery.



Dual-Cylinder System & Paper Clamping

Advanced **Dual-Cylinder Paper Clamping** engineering allows a larger paper press point for more solid fill, and facilitates superior imprint accuracy and registration by firmly holding your paper in place while it is being inked. Quieter operation is an added bonus. In addition, double feeding is eliminated due to the separation resistance provided by friction pad technology,



Print in either standard or custom colors on all stocks from bond to index in a full range of sizes.

as is paper wrapping, because an enhanced air suction method streamlines intake of all your stock thicknesses. Bond, Index, even envelope stocks run seamlessly through the 5499 CopyPrinter, which also assures smooth processing of select existing pre-printed four-color, foil-stamped and embossed/debossed originals such as letterhead, because unlike all copiers, there is absolutely NO heating element to interfere. The lack of a required heating element also greatly reduces energy consumption as compared to high-speed copiers, with the 5499 CopyPrinter using *as little as 4%* of the power of a high-speed copying system!

Completing the 5499's high-performance package is an

all-new offset-like **Double Feed Detector** for reliable printing. An intuitive built-in sensor, which can be adjusted based on your needs, emits light to continually calculate the degree of brightness of paper as compared to previously fed sheets. Misfeeds, missing pages and time needed to check output are drastically minimized.

VERSATILE, USER-FRIENDLY FEATURES

The Gestetner 5499 supports your demanding workflow with a host of advanced, convenient features that are simple enough for anyone in your organization to use.

- You can **scan and store up to eight originals** for instant retrieval and printing anytime. Scanned images are also

auto-rotated to match the direction of blank paper in your feed trays. Even an 11" x 17" original that's reduced to letter size is automatically scanned and rotated so your image is just right.

- The **built-in Job Separator** keeps your large job runs in order, mechanically separating multiple print jobs by offsetting the top sheet of each previous job.

- The **Automatic Document Feeder** detects your original size and automatically cuts the master material to the most suitable size, saving up to 33% of the cost of masters.

- Originals are **automatically enlarged or reduced** based on the size detected in the feed tray. Two originals can also be combined two-up, or, a single original can be placed four-up without the need for further editing.

- Copying from bulky **bound originals**, up to 11" x 17", is effortless with ingenious depth-of-field technology that ensures clear copies with no secondary shadowing.

- Topping off the 5499 CopyPrinter's capabilities are: **User Codes** for tracking up to 20 different accounts, **9 Preset Job Settings** for instant access to frequently-run jobs (such as forms), plus **Stamping, Overlay** and **Security Modes**.

- **Energy Saver Mode** conveniently kicks in when the system is not in use to reduce power consumption to 85 percent of normal operation.

PRODUCTIVITY-OPTIMIZING OPTIONS

With the optional **true PostScript® 3 embedded Type 80 Controller** interface, the 5499 CopyPrinter easily connects with any standalone computer or networked operating system. Users enjoy not only extraordinary print control and ripping performance, but real-time access to such information as paper settings, misfeed alerts, job history details, security features, and workflow management with other Gestetner digital products on your local area network (LAN) with the assistance of **SmartNetMonitor** advanced printer management software.



The Gestetner TC-II Digital Production Printer.

Need even *more* high-volume print production power? The **Gestetner TC-II Digital Production Printer** takes your production capabilities to new heights. Working in conjunction with the 5499 CopyPrinter, the optional TC-II provides the **world's first two color in one pass** duplicator reproduction. Its two inline print cylinder chambers accept the 5499 CopyPrinter's color cylinders. Because the TC-II has no scanner or

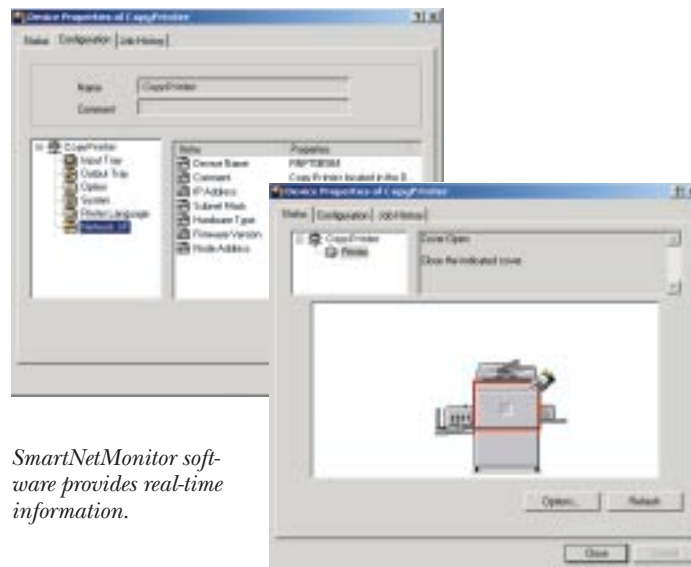
master-making capabilities, it relies on the 5499

CopyPrinter to produce two separate masters, optimizing productivity and saving you valuable time and money. Reap the rewards of not only exacting registration on all two-color output plus a super 120-page-per-minute speed, but ultimate efficiency in producing your most critical multi-color jobs. Now your multi-part jobs can be printed at an amazing 240 pages per minute when two jobs are run simultaneously!

When print-on-demand professional output and cutting-edge performance are your concern, the Gestetner 5499 CopyPrinter provides your operation with all the speed, image superiority and reliable high-volume production capabilities it needs.

For more information and a product demonstration, contact your authorized Gestetner Dealer.

www.gestetnerusa.com



SmartNetMonitor software provides real-time information.

Features, options and connectivity choices second to none.



All operation keys are located on the 5499's control panel which prompts the operator through the selection of features while indicators keep the user informed of the system's operational status.



The Automatic Document Feeder ensures that the master is cut to the most efficient size. This saves up to 33% of the cost of masters without using the optional short drum!



The 5499 has a single master cylinder for a self-loading master process, and ink cartridges that load and remove quickly and neatly. The Master Disposal System is fully enclosed and the 5499 alerts you when it's full — just slide out the cartridge, discard the used masters and replace.



Additional optional integrated, hot-swappable master color cylinders are easily loaded.



Optional UC5 or UC5e Print Controller for use with text documents.



Optional UC6 Print Controller offers a full range of capabilities.



Adobe® PostScript® 3™

Print from virtually any connected Windows, Macintosh or networked operating system with the optional PostScript 3 Type 80 Print Controller.

5499

COPYPRINTER



Specifications

Configuration	Desktop Book Copying
Master Processing	Fully integrated digital duplicator
Pixel Density	600 dpi
Scan Resolution	600 dpi
Print Resolution	600 dpi
Printing Process	Dual cylinder system, paper clamp system
Image Scanning	CCD with lens
Paper Feed System	Paper roller and clamp mechanism
Reduction Ratios	93%, 77%, 74%, 65%
Enlargement Ratios	155%, 129%, 121%
Zoom	50% – 200% in 1% increments
Image Mode	Letter, Photo, Letter/Photo Auto Separation, Tint
Original Sizes	Max: 12" x 17" (Platen) Min: 4.1" x 5.0", Max: 11.6" x 34" (ADF)
Paper Sizes	2.8" x 5.8" to 12.8" x 17.6"
Image Area	11.4" x 16.5"
Paper Weights	12.5 lb. Bond to 110 lb. Index
Print Speeds	60, 75, 90, 105 or 120 ppm
Master Process Time	25 seconds
Paper Feed Tray Capacity	1,000 sheets
Paper Delivery Table Capacity	1,000 sheets
Optional ADF Original Capacity	50 sheets
Power Source	120V, 60Hz, 2.4A
Power Consumption	Max. 260 W
Print Counter	9,999,999
Master Counter	999,999
Noise Emission	58–64 dB
Dimensions (WxDxH)	56.5" x 27.5" x 23.0"
Weight	231 lbs.
Masters	255 L-size sheets per roll 410 S-size sheets per roll
Master Run Length	More than 2,000 impressions
Master Disposal Capacity	65 to 100

Options

DF-85 50-Page ADF
TC-II Digital Production Printer
Base Cabinet
Platen Cover
Color Cylinders
5499 Ink Choices (Standard and custom PMS)
Type 80 Print Controller, UC6 Print Controller, UC5 or UC5e Print Controller
Type 85 Editing Board

NOTE: Additional Interface Board required when connecting the 5499 CopyPrinter with UC5, UC5e and UC6.

Other Features

No-Waste Confidential Mode
No-Waste Quality Start Mode
Ink Blade Distribution Control
Electronic Vertical/Lateral Registration
Digitally Controlled PF Settings
8-Page Storage and Recall Memory
Dual PF Friction Pad System
Skip Feed Mode
User Code Audit Mode
Economy Mode
Image Overlay
Tint Mode
Directional Magnification
Auto Image Rotation
Two Up Mode
Multi-Copy Modes (2, 4, 8, 16 in 1)
Auto Separation, Line/Photo Mode
Auto Paper Size Detection
Auto Original Size Detection
Auto Background Correction
User Program Mode
Photo Mode
Editing
Class Mode (9 grades x 18 classes memory)
Status Sheet Printout
SP Mode
"L" & "S" Auto-Cut Master
Shadow/Edges/Center Erase
Stamping Mode
Tapeless Job Separator
Auto Contrast Control
I/O Service Mode

Gestetner

Gestetner Stamford, Connecticut 06904

Product specifications subject to change without notice.

All other trademarks are the property of their respective owners.

Gestetner reserves the right to modify any standard ink choices without notice.

Printed in U.S.A. (G1723) 35M 12/02